

WHAT'S NEW IN

BEST PLACES TO LIVE IN AMERICA

West
OHIO
Chester

WestChesterDevelopment.com



PROPERTY TO BE DEVELOPMENT AS LIFESTYLE CENTER

An upscale mixed-use community with owner-occupied condos, grocery retailers and new to market dining options is planned for West Chester's northern boundary. The developer, Steiner + Associates, is a familiar name to the area.

A recent zoning change will allow for the mixed use lifestyle community on 19 acres at West Chester's northern border on Liberty Way.

With the development of the nearby Liberty Center and Cabela's of West Chester, Steiner + Associates envisions this complimentary development meeting growing desires for work-life balance among consumers. The new luxury condos will be within walking distance to the retail and dining options available in the area. The proposed condos would represent the only owner-occupied residential units within this new retail destination.

"As the Uptown district of our community continues to develop in conjunction with neighboring Liberty Township, this proposed development furthers goals of sustainability for West Chester residents," said West Chester Administrator Judi Boyko. "The qualities that drive West Chester's ranking as one of Money Magazine "Best Places to Live" appeal to a wide range of potential homeowners and investors."

2Q-2016

IN THIS ISSUE

[Technology Developments](#)

[Manufacturing Developments](#)

[Office/Medical Developments](#)

[Industrial Developments](#)

[Additional Developments](#)

[NOW OPEN](#)

[COMING SOON](#)

[Looking for Space?](#)

[Our Sponsors](#)

[Looking for Space?](#)



West Chester ...

Built With You In Mind!

>174,986 sq.ft.

Class A Office space
available Downtown

>7,552 sq.ft. Medical

In addition to new residential units, initial development plans also call for table-service dining options and new-to-market specialty retailers.

"Cabela's and IKEA have proven West Chester as a market that can sustain distinct retailers looking for a presence in the Cincinnati-Dayton corridor. We anticipate the retail component of this new development to continue this trend of unique offerings to serve this market," said Juengling.

Steiner will next present development plans to West Chester Township as the process moves forward. Construction is expected to begin later this year.

Technology Developments



Peak 10, a national information technology (IT) infrastructure solutions provider serving customers from around the world, announced a 21,521 square-foot expansion to its existing West Chester operations at 5307 Muhlhauser Road. The company now occupies a total of 44,400 square feet in The Pointe at Union Centre building. Peak 10 provides companies with tailored technology solutions to meet specific technical challenges, drawing from a portfolio of secure cloud solutions, cost-saving managed services, enterprise-class data center space and reliable network services. Peak 10 Cincinnati plays a major role in supporting economic development in the southern Ohio/Northern Kentucky region by providing businesses with reliable IT infrastructure solutions including cloud and data center solutions and managed services. Peak 10 was recognized in the Gartner October 2015 Market Guide for Cloud Service Providers to Healthcare Organizations. www.peak10.com

Office space available

>1,200,620 sq.ft.

Industrial space available

>185,721 sq.ft. Retail space available

[Search Available](#)
[West Chester](#)
[Properties Now](#)

or
contact

Aaron Wiegand,
Business Attraction and
Expansion Manager for
personalized assistance
at
(513) 777-4214

Our Sponsors



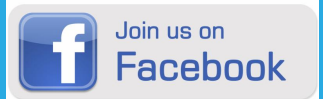
[AstraZeneca](#)
[Contingent Network Services](#)
[DRT Medical - Morris](#)
[First Financial Bank](#)
[GE Aviation](#)
[Griffin Capital](#)
[Planes Companies](#)
[Republic Wire](#)
[RiskSOURCE Clark-Theders](#)
[Schumacher Dugan](#)



ATC (Advanced Technology Consultants), an independent telecom agency and consulting firm, relocated its Ohio headquarters to a 3,625 square-foot facility at 8734 Union Centre Boulevard in Lakota West Professional Building (Downtown). ATC removes the business complexities of researching, comparing, procuring, implementing and managing telecommunication solutions using its team of Certified Telecom Professionals (CTP) that leverages an extensive network of technology providers to deliver unbiased insight and tactical proficiency. ATC's technical expertise includes VoIP business phone systems, network services, unified communications, cloud computing, and collaboration solutions, strategic consulting, contract negotiation, project management, business-needs analysis and support. www.4atc.com

- [Construction](#)
- [Systecon](#)
- [West Chester Hospital](#)
- [West Chester-Liberty Chamber Alliance](#)
- [West Chester Township](#)
- [Wetherington Golf and Country Club](#)

Stay On Top of New Developments...



Manufacturing Developments



C-Tech Industries, a world leading manufacturer of joysticks and control boxes for Boom and Scissor Lift equipment, announced a 19,990 square-foot expansion to its existing West Chester operations now occupying a total of 22,848 square feet in ProLogis Park (Downtown). C-Tech Industries also supplies control systems and other service parts for nearly the entire spectrum of Aerial Lift Manufacturers. C-Tech Industries is proud to be the first to market with its latest products and newest technology offered by the Original Equipment Manufacturers. www.ctech-ind.com



Precision Environments, a design/build turnkey manufacturer of specialized controlled environments, expanded its existing West Chester operations to occupy 8,150 square feet facility at 9830 Windisch Road. Precision Environments has been designing, building and servicing controlled environments domestically and international since 1989. These turnkey projects include all disciplines of building technology including but not limited to architectural, electrical, mechanical and controls. www.precisionenvironments.com

Sizewise, a global medical equipment manufacturer with more than 20 years' experience engineering innovative products to meet the needs of bariatric, geriatric, pediatric and station patient populations worldwide leased a 6,072 square-foot facility at 4766 Interstate Drive off Princeton-Glendale Road/SR747. Sizewise addresses the safety and dignity concerns of patients and caregivers by offering innovative programs for rentals, capital purchases and lease-to-own equipment. www.sizewise.net

Office/Medical Developments



ProLogis, a leading owner, operator and developer of industrial real estate, announced it will relocate its Cincinnati headquarters to a 4,106 square-foot facility at 8760 Global Way in ProLogis Park off Union Centre Boulevard (Downtown). ProLogis creates value by developing and managing a world-class portfolio of high-quality logistics and distribution facilities serving customers and investors as an integral part of the global supply chain. ProLogis focuses on global and regional markets across

the Americas, Europe and Asia. www.prologis.com

Meuselbach Family Dental, specializing in family and cosmetic dentistry, announced it will construct a new 6,774 square-foot medical building at 7200 Tylersville Road just west of I-75. Dr. Meuselbach's goal is to share his philosophy and passion for lifelong, comprehensive, quality oral healthcare in a modern and comfortable setting. Meuselbach Family Dental is equipped with the latest and safest advanced technology, and staffed with a team of gentle, caring, qualified professionals. Dr. Meuselbach will occupy 4,171 square feet of the new building leaving 2,602 square feet available for lease. www.drmeuselbach.com

Industrial Developments



Omicron Granite and Tile Cincinnati, a wholesale distributor of granite products, opened a 27,950 square-foot facility at 9751 International Boulevard in World Park. Omicron Granite imports the finest natural and man-made Caesarstone slabs from around the world and showcases them in an indoor warehouse. Omicron Granite also offers marble and onyx for countertops, spas, tub and shower surrounds, outdoor kitchens, natural stone flooring, along with a wide collection of designer kitchen and bath fixtures. www.omicrongranite.net

Platinum Worldwide Expediting, a fast growing company in transportation logistics, leased a 5,967 square-foot facility at 4800 Interstate Drive off Princeton-Glendale Road/SR747. Platinum Worldwide Expediting specializes in dry and refrigerated products along with auto hauling and power only equipment. Platinum Worldwide Expediting also has a dedicated department that provides LTL, container, drayage, heavy haul as well as air and sea expediting. Platinum Worldwide Expediting manages transportation for Fortune 500 companies across the United States. www.platinumexpediting.com

Additional Developments



Goldfish Swim School, passionately building character one stroke at a time, announced it will open a 9,780 square-foot state-of-the-art swimming facility at 7058 Ridgetop Drive in the Highland Square development (Midtown). Goldfish Swim School offers a curriculum crafted to teach kids to swim while also building character. Goldfish Swim School's revolutionary Perpetual Lessons model includes one lifeguard-certified instructor for every four children, year round lessons for children 4 months to 12 years, flexible scheduling, and a curriculum focused on teaching swim and safety skills. From the moment the customer walks in the door, they enter a tropical oasis with brightly colored walls, tiki cabanas, surfboard benches and the always tropical 90 degree pool. www.westchester.goldfishswimschool.com



Golf Exchange, known for its award-winning and nationally recognized custom fitting service, relocated to a 1,750 square-foot retail store at 7610 Cox Lane in the Marketplace at University Pointe (Uptown). Golf Exchange is a golf store run by golfers who share a passion for the game and for helping each customer find the right equipment. Golf Exchange employs the industry's leading fitting technology, like TrackMan, in all its stores, which has established them as one of the country's best fitters. Golf Exchange has been listed among Golf Digest's Top 100 Fitters in America. www.golfexchange.com



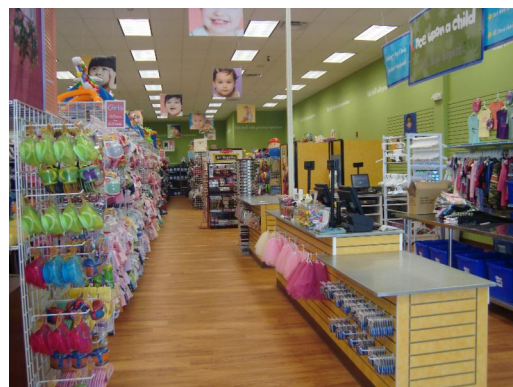
Kroger Marketplace, the country's largest supermarket chain by revenue and the second largest general retailer in the United States, announced it will build a 133,000 square-foot Kroger Marketplace shopping center at the southeast corner of Princeton-Glendale Road/SR747 and Tylersville Road on a 36-acre site. The first phase of the new Crossings at Beckett will include the Kroger Marketplace, a fuel pump station, Fred Meyer Jewelers and a small medical clinic. Plans for the second phase include a 42,000 square foot retail space along with 22,000 square feet of office space and three additional outlots along Princeton-Glendale Road/SR747. www.kroger.com

NT Nails, a full-service nail salon, opened a 1,474 square-foot facility at 6875 Fountains Boulevard off Cincinnati-Dayton Road in Union Station of West Chester (Midtown).

Nationwide Insurance/Wene Insurance Group, a full-service insurance agency, relocated and expanded its existing West Chester office to a 1,500 square-foot space at 6511 West Chester Road in Olde West Chester. Wene Insurance Group is committed to providing customers with the best possible coverage available at the best possible price. Wene Insurance Group proudly serves all of Ohio, Kentucky, Indiana, and Michigan. www.nationwide.com

Ohio Ambulance Solution, providing 24-hour emergency and non-emergency ambulance service, expanded its existing West Chester operations to occupy 24,000 square feet facility at 9940 Princeton-Glendale Road/SR747. Ohio Ambulance provides qualified paramedics and EMTs offering professional care and compassion in route to their destination. Ohio Ambulance uses advanced methods of communication and cooperation between its staff members and other healthcare professionals. Ohio Ambulance also provides services to skilled nursing facilities, hospitals and other medical facilities. www.ohioambulance.com

Once Upon a Child, the largest kids resale franchise in North American, announced it will relocate and expand its existing West Chester store to a 7,852 square-foot retail space at 7758 Dudley Drive in the Tylersville Farm retail development (Uptown). Once Upon a Child, in business for 20 years, buys and sells gently used kids' clothing, shoes,



toys and baby gear at up to 70% off retail. Once Upon a Child currently has eight locations in the Cincinnati/Dayton region. The new uptown Once Upon a Child is slated to open at its new location this summer. www.onceuponachildcincydayton.com

Pet Valu, a national retail chain carrying pet food, supplies, toys and other products for pets, announced it has purchased 32 of the existing Jack's Pets stores in Ohio, Indiana and Kentucky which they will convert to Pet Value stores once renovations have been made. The Canadian company plans to invest up to \$4 million to renovate and convert each of its new locations. The West Chester store is located at 8146 Princeton-Glendale Road/SR747 in Beckett Commons shopping center. The Pet Valu pet-friendly store offers more than 7,000 products including holistic and premium brands of pet foods and treats. www.petvalu.com

Boost Mobile, one of Sprint's prepaid brands, opened a nearly 1,000 square-foot store at 7967 Cincinnati-Dayton Road in Lakota Plaza (Midtown). Boost Mobile offers a wide selection of the latest phones from top manufacturers at affordable prices. www.boostmobile.com

Plato's Closet, a national franchise with more than 350 locations across the U.S. and in Canada, announced it will relocate and expand its existing West Chester store to a 5,550 square-foot space at 7742 Dudley Drive in the Tylersville Farm retail development (Uptown). Plato's Closet buys and sells gently used clothing and accessories for teen and "20-something" guys and girls. Plato's Closet offers a selection of trendy, designer styles, as well as every day basics at up to 70% off retail prices. There are currently seven Plato's Closet locations in the Cincinnati/Dayton region. The West Chester Plato's Closet is slated to open at its new location in June. www.platosclosetcincydayton.com

Relax Wash + Fold, an on-demand, full-service residential laundry service, opened a nearly 1,000 square-foot facility at 7324 Kingsgate Way off Tylersville Road (Uptown). Relax Wash + Fold provides residential laundry and dry cleaning pickup and delivery services to your home or office. Relax Wash + Fold returns the clothes to its customers folded, sorted, wrapped and all within two business days or sooner. www.neverwashagain.com



Salon Concepts, providers of fully equipped suites for independent hair stylists, manicurists and massage therapists, announced a 1,389 square-foot expansion to its existing West Chester facility at 9274 Centre Pointe Drive in the Towne Centre Square at Union Centre building (Downtown). Salon Concepts is an entrepreneurial community of like-minded professional stylists who work and interact together under one roof while operating independently within their own private suites. Salon Concepts now occupies more than 5,100 square feet in downtown West Chester. www.salon-concepts.com

Specialty Service Supply, a wholesale distributor and warehouse for some of the world's industry leading companies, announced it will open its first Ohio location in a 25,000 square-foot facility at 9910 Charter Park Drive in Schumacher Commerce Park. Specialty Service Supply offers a wide variety of stone products along with quartz countertop materials and more. www.specialtyservicesupply.com

Sunrise Shipping Service, providing a variety of packing and shipping services, opened a 7,680 square-foot facility at 4902 Union Centre Pavilion Drive at Princeton-Glendale Road/SR747 in the Union Centre Pavilion retail center.

U.S. Relocation Systems, a full-service licensed and insured relocation company, opened a 12,000 square-foot facility at 5150 Duff Drive. U.S. Relocation Systems manages its own fleet of trucks with professionally trained movers who specialize in nationwide long distance moving and relocations.

West Chester Auto Body, a full-service auto body repair shop with more than 30 years combined experience, expanded and relocated its existing operations to an 18,420 square-foot facility at 9356



Cincinnati-Columbus Road/SR42. West Chester Auto Body provides state-of-the-art auto body collision repair for vehicles of all shapes and sizes. West Chester Auto Body has built strong working business relationships with all major insurance companies to expedite the repair process. West Chester Auto Body has been proudly serving clients in the greater Cincinnati area since 1969.

www.westchesterautobody.com

West Chester Rug Gallery, specializing in quality handmade and machine-made rug and carpet sales, relocated and expanded its existing West Chester business to a 3,020 square-foot facility at 7743 Tylersville Road at Cox Road (Uptown). West Chester Rug Gallery offers in-house design services and assistance matching color swatches, fabrics or paint. www.westchesterruggallery.com



Wild Birds Unlimited, a nature shop specializing in supplies for feeding and observing birds, opened a 1,868 square-foot store at 7712 Voice of America Centre Drive in the VOA Shopping Centre (Uptown). Wild Birds Unlimited offers Certified Bird Feeding Specialists that are trained to show people how to transform their yards into bird feeding habitats. Based on more than 30 years of research and experience, Wild Birds Unlimited has products designed to be the highest quality bird feeders and bird feeding equipment on the market. www.wbu.com

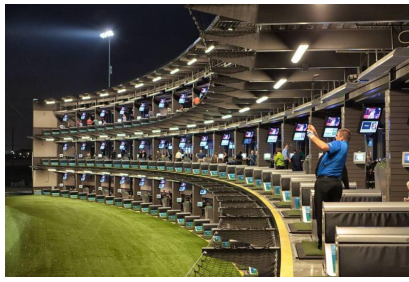
NOW OPEN

- [Beef Jerky Outlet](#)
- [West Chester Rug Gallery](#)
- [Wild Bird's Unlimited](#)
- [Golf Exchange](#)



COMING SOON

- [Bagger Dave's Burger Tavern](#)
- [TopGolf](#) (late July/early August - now hiring)
- [Main Event](#) (now hiring)



West Chester Township | | veldridge@westchesteroh.org |
<http://www.westchesterdevelopment.com>
9577 Beckett Road, Suite 100
West Chester, OH 45069

[Join Our Mailing List!](#)

Copyright West Chester Development Council

Copyright © 20XX. All Rights Reserved.