



What's New In West Chester

Brought to you by West Chester Township and West Chester Development Council

WestChesterOH.org * WestChesterDevelopment.com

July 2011

CLASS A OFFICE SPACE IN UNION CENTRE REACHES PEAK OCCUPANCY OF 98 PERCENT

West Chester's Downtown at Union Centre is the community's most recognizable and visible display of economic growth and success. Top performing companies have located in this business district which offers exceptional visibility, access and proximity to the Cincinnati-Dayton Metroplex.



West Chester's Class A office space in this Downtown district is in demand for companies focused on expansion and growth and has now achieved its highest occupancy rate with 98 percent of the available Class A office space filled.

Centre Pointe Office Park, the Tri-State's 6th largest suburban office center, is located immediately adjacent to Union Centre Boulevard and offers 768,000 square feet of Class A office space spread over six individual buildings, managed by Duke Realty. Average occupancy over the previous three years has been between 88 and 91 percent.

Major occupants in the Centre Pointe Office Park include: AK Steel corporate headquarters; GE Aviation; Frost, Brown, Todd LLC; Bricker and Eckler LLP, Contech Construction Products and Kimberly Clark.

GE Aviation, a world-leading provider of commercial and military jet engines and components, recently leased 80,848 square feet of office space in Centre Pointe Office Park Building 3. GE Aviation already occupies two; 210,000 square feet Class A office buildings at North Pointe at Union Centre (the 12th largest suburban office center in the Tri-State), and an additional two floors of Centre Pointe Office Park Building 1.

The new space at the Centre Pointe Office Park will house another 300 employees bringing GE

Aviation's total employment in the township to nearly 2,000 engineers.

Residential



The Village at the Streets of West Chester, a new townhouse condominium development adjacent to The Streets of West Chester retail complex at Union Centre Boulevard and I-75, nears completion on the first six units of this unique residential community. The two-story brick townhomes with attached garages are located in this new lifestyle community within walking or biking distance of the nearby Streets of West Chester shopping, dining and entertainment venues. The Village at the Streets is centrally located offering easy access to many major thoroughfares and two interstates. The first phase of this new residential development will include 12 buildings, with 60 new townhouse condominiums.

Commercial

Aveda Fredric's Institute, the Aveda Fredric's Institute (AFI) has been "developing future leaders in the world of beauty and wellness"™ since May of 1999 in their current Hyde Park location. This Fall, 2011 all corporate operations, education classes and student salon spa services will be relocated to the new, larger 27,000 square-foot facility in Voice of America Shopping Center (Uptown) that was previously occupied by Linens and Things. Aveda Fredric's Institute is a nationally accredited and acclaimed cosmetology school. The AFI program has produced three North American Hairstyling Awards (NAHA) Student Hair Stylist of the year winners and five NAHA finalists, has been a Better Business Bureau Torch Award finalist, and has appeared in various "Best of" issues of The Cincinnati Enquirer, Cincinnati Magazine, and City Beat. AFI students have provided hair and make-up creations for three major movies. Its Cosmetology and Esthiology students have, and will continue to participate in fashion shows with University of Cincinnati DAAP, Miami University Club of Fashion & Design, and community and

Industrial



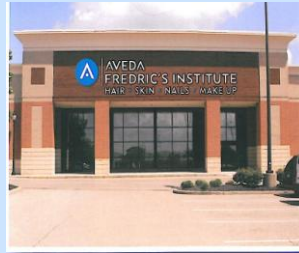
Simplex Grinnell, providing a comprehensive array of fire alarm, fire sprinkler, fire suppression, integrated security, sound and healthcare communications systems and services, relocated its existing West Chester business to a 21,115 square-foot facility at 9685 Cincinnati-Dayton Road in Schumacher Commerce Park (Downtown). www.simplexgrinnell.com

Artisan Mechanical, a leading mechanical contractor in the U.S., relocated to a 64,132 square-foot facility at 366 Circle Freeway Drive off Crescentville Road. Artisan Mechanical offers precision and expertise in pipefitting, welding, plumbing, and specialty

Schumacher Schwartz is the developer for this project and Ryan Homes is the builder. www.ryanhomes.com

charity events with the main focus of providing exceptional guest services as part of their interactive hands-on education experience. Students are supervised by licensed instructors while performing all services. Aveda Fredric's Institute is currently enrolling students. www.avedafredricsinstitute.com/voa.

fabrication for a diverse range of industrial applications. www.artisanmechanical.com



Additional New Developments

A Step Above Flooring & Installation, specializing in commercial and residential carpet, hardwood, ceramic tile, vinyl, laminate flooring and custom area rugs at competitive prices, opened an 11,300 square-foot facility at 9634 Inter-Ocean Drive off Muhlhauser Road. www.astepabovfloors.com

ATC Turbine, a division of ATC, a supply chain management and engineering services company, leased a 6,000 square-foot facility at 5146 Duff Drive off Princeton-Glendale Road/SR747. ATC's Turbine Division is an authorized GE distributor for Single Stage Industrial and Marine Turbine parts, as well as other hard to find mechanical and electrical parts. www.argoturbo.com

Airtron Heating & Air Conditioning, providing state-of-the-art, energy efficient heating and air conditioning equipment for all major manufacturers, opened an 18,878 square-foot facility at 9422 Meridian Way in Duke Realty's World Park at Union Centre (Downtown). www.airtrondayton.com

Alpha & Omega Granite Works, a granite top finishing and manufacturing firm, announced it will open a 1,500 square-foot facility at 9049 Innovation Way off Port Union Road in the Fall of 2011.

Baxter-Lane Furniture, specializing in wholesale furniture distribution, announced a 12,615 square-foot expansion to its existing West Chester facility located at 9679 Cincinnati-Dayton Road near Allen Road (Downtown). Baxter-Lane Furniture is open to the public and offers deep discounts off original retail pricing.

www.furnituredirectclearancecenter.com

Bay Logistics, a comprehensive provider of supply chain management services including warehousing, transportation, logistics, repacking, sequencing, quality inspections, light assembly, packaging, sorting, kitting, local shuttle, and inventory management. Bay Logistics opened its new regional facility on Circle Freeway Drive in the Capital Center development. Bay Logistics' investment in facilities, infrastructure and IT systems allows clients to focus resources on core competencies and areas of expertise.

www.baylogistics.com

Bright Beginnings Child Development, a full-service day care and educational facility, announced it will open a 3,200 square-foot center at 8633 Cincinnati-Columbus Road/SR42. Bright Beginnings will be open Monday through Saturday to meet all your daycare needs, with the grand opening slated for mid-August 2011.

Chase Bank, a leading global financial services firm with operations in more than 60 countries, began construction on two new 5,240 square-foot branch offices in West Chester. The first branch is slated to open 3rd quarter of this year at 8100 Market Place Drive at the Villages of West Chester (Beckett). The second facility, located at 8115 Highland Pointe Drive (Midtown), is scheduled to open 4th quarter 2011. www.chase.com

Cincinnati Arthritis Associates, specializing in patient-centered care for individuals suffering from arthritis, muscular-skeletal disorders, and immune-mediated inflammatory disease, announced it will open a 2,500 square-foot medical office at 7798 University Court in the University Pointe medical campus (Uptown). Cincinnati Arthritis Associates will offer onsite infusion therapy and be the first group of its kind in the region to offer ultrasound. The new location will open August 1st, 2011.

www.cincinnatiarthritisassociates.com

ClarkDietrich™ Building Systems, manufacturers of light gauge steel framing products, leased a 5,362 square-foot office at 9050 Centre Pointe Drive in Centre Pointe Office Park (Downtown). Clark Dietrich offers technical support services and smart tools for design for the metal framing industry. www.clarkdietrich.com

Clark-Reder Engineering, a full-service engineering consultant firm, announced it will open a 1,600 square-foot facility at 4828 Business Center Way at Princeton-Glendale Road/SR747 and Crescentville Roads. Clark-Reder Engineering has 22 years combined

experience in entertainment engineering, new building design, building renovations, and construction services. www.clark-reder.com

ComDoc, a document imaging solutions partner, announced it will open a 2,913 square-foot office at 9270 Centre Pointe Drive in the Centre Pointe Office Park (Downtown). ComDoc provides products, services, support and solutions to businesses of all sizes. ComDoc is slated to open in August 2011. www.comdoc.com

Crossmark, a leading sales and marketing services company in the consumer goods industry, will open a 12,261 square-foot office at 9277 Centre Pointe Drive in Centre Pointe Office Park (Downtown). Crossmark is slated to open August 2011. www.crossmark.com

Dayton Hydroponics, a garden supply company, opened a 7,384 square-foot facility at 4920 Provident Drive off Princeton-Glendale Road/SR747. Dayton Hydroponics offers indoor and organic gardening supplies, plant lighting, propagation equipment, fertilizer, pumps, greenhouses and more. www.daytonhydroponics.com

Dr. Amy Brenner MD & Associates, a board-certified OB/GYN physician with 15 years of experience, opened a 1,997 square-foot medical office at 7593 Tylers Place Boulevard (Uptown). Dr. Brenner specializes in treating women for everything from birth control, pap smears, preconceptual care, incontinence, pelvic prolapse, hormonal issues associated with menopause, to minimally invasive gynecological surgery. www.dramybrenner.com

GE Aviation, a world-leading provider of commercial and military jet engines and components, recently leased an additional 80,848 square feet of additional Class A office space in Duke Realty's Centre Pointe Office Park Building 3 (Downtown). GE Aviation already occupies two 210,000 square-foot Class A office buildings at North Pointe at Union Centre (the 12th largest suburban office center in the Tri-State), and an additional two floors of Centre Pointe Office Park Building 1. The new space at the Centre Pointe Office Park will house another 300 employees bringing GE Aviation's total employment in the township to nearly 2,000 engineers. In addition, GE Energy has leased just over 10,000 square feet in Centre Pointe Building 1. www.ae.ge.com

Jacks Driving School, providing teenage and adult driving instruction, announced it will open a 4,380 square-foot facility at 5900 West Chester Road (Downtown). Jacks Driving School offers a state certified course for teen drivers. The school will open early September 2011. www.jacksdrivingschool.com

Las Copas Mexican Restaurante and Cantina, specializing in Mexican cuisine, opened a new restaurant at 8111 Cincinnati-Dayton Road (Midtown).

Lennox Parts Plus, wholesale distributors for Lennox heating and air conditioning products, announced it relocated to a 12,000 square-foot facility at 4858 Provident Drive off Princeton-Glendale Road/SR747. Lennox Parts Plus provides furnaces, air conditioners, and many other HVAC system products. www.lennox.com

Liberty Vac & Sew, specializing in the sales and service of all vacuum cleaner makes and models, opened a 1,006 square-foot facility at 8266 Princeton-Glendale Road/SR747 (Beckett). Liberty Vac & Sew also services any make and model of sewing machine.

Management Plus Realty Service, a full-service property management firm, announced it will relocate its existing West Chester business to a 5,879 square-foot facility at 9916 Windisch Road (Downtown). Management Plus Realty Service specializes in condominium and homeowner association management. www.managementplusrealtyservice.com

Parker Aerospace, specializing in the design and build of support systems and components for the aircraft industry, leased a 1,366 square-foot facility at 9050 Centre Pointe Drive in Centre Pointe Office Park (Downtown). www.parker.com

R&R Tool, Inc., a contract machining company specializing in medical component manufacturing, opened a 2,303 square-foot facility at 9964 Crescent Park Drive in Schumacher Commerce Park (Downtown). www.rrtoolinc.com

RAM Construction Services, a specialty construction contractor for new building construction and the restoration of existing buildings, opened an 11,762 square-foot facility at 4710 Ashley Drive of Princeton-Glendale Road/SR747. Ram Construction Services specializes in commercial, industrial and institutional new construction and restoration. www.ramconstructionservices.com

Sharp Business Systems, specializing in business-to-business technology, digital signage, print management hardware/software, and copier and scanner sales and service, announced it will open a 6,600 square-foot facility at 9031 Meridian Way in Duke Realty's World Park at Union Centre (Downtown). www.sbs-ohio.com

SushiMonk, specializing in free-style Japanese dining by Chef Tam, opened a 1,050 square-foot restaurant at 8268 Princeton-Glendale Road/SR747 (Beckett). Chef Tam specializes in Japanese cuisine and offers sushi cooking classes in his restaurant or at your home. www.sushimonk.com

The Boys Auto Financing, providing quality auto loans for over five years, opened a nearly 1,000 square-foot facility at 8939 Cincinnati-Columbus Road/SR42 north of Cox Road.

Three Bond International, a world leader in the development, manufacturing and supply of adhesives and sealants, began construction on a 14,860 square-foot expansion to its existing West Chester facility at 6184 Schumacher Park Drive in Schumacher Commerce Park (Downtown). With nearly 50 years of experience, Three Bond offers solutions to adhesive and dispensing needs. www.threebond.com

Winstel Controls, specializing in wholesale plumbing, HVAC, and electrical parts and equipment, relocated its headquarters to a 12,000 square-foot facility at 10126 Transportation Way off Crescentville Road. Winstel Control's serves residential, commercial and industrial customers with its three Cincinnati area locations. www.winstelcontrols.com



Follow Us On Facebook

West Chester Development Council is now on Facebook. Follow all of the exciting development news as it occurs.

Our Supporters

Amylin Pharmaceuticals

BAE Systems

Chappell Construction

Clark-Theders Insurance Agency

Duke Realty Corporation

First Financial Bank

GE Aviation

Industrial Developments International

Schumacher Dugan Construction Company

West Chester 75, Inc.

West Chester-Liberty Chamber Alliance

West Chester Hospital

Wetherington Golf & Country Club

