



# What's New in WEST CHESTER

| Previews of new business developments |



## OUR SUPPORTERS

- [Chappell Construction](#)
- [Continental Real Estate](#)
- [Cornerstone CSG](#)
- [Dell](#)
- [Duke Realty](#)
- [Fifth Third Bank](#)
- [First Financial Bank](#)
- [First Industrial](#)
- [Huntington National Bank](#)
- [Industrial Developments Int'l](#)
- [Pierre Foods](#)
- [ProLogis](#)
- [RGW Development](#)
- [Schumacher Dugan Construction](#)
- [Palmer Group/Palmer Temps](#)
- [TSK America](#)
- [US Bank](#)
- [West Chester 75](#)
- [West Chester Chamber Alliance](#)
- [West Chester Township](#)
- [Wetherington Golf & Country Club](#)

These companies support West Chester initiatives to attract new business investment to the community and schools

## Featured Projects



Photo by Duke Realty

### ***Centre Pointe V*** ***By Duke Realty Corporation***

**Centre Pointe V**, a new 135,109 square foot, Class A corporate office building announced by Duke Realty in March 2006. Centre Pointe V, located at 9227 Centre Pointe Drive, will be constructed on 5.82 acres in the Centre Pointe Office Park in the Union Centre Boulevard District. Construction on this four-story office building has begun and completion is scheduled for March 2007. Centre Pointe Office Park will provide more than 600,000 square feet of office space when fully developed. Duke Realty is the largest publicly traded office and industrial real estate company in the U.S. [www.dukerealty.com](http://www.dukerealty.com)



***Port Union at Union Centre/Building J  
By Industrial Developments International***

**Port Union at Union Centre/Building J**, a new 109,063 square foot building was announced March 2006 by Industrial Developments International (IDI) at 7400 Union Centre Boulevard in the 192-acre business park development. IDI is pre-leasing now and the building is scheduled for completion in August 2006. IDI is a full-service real estate developer providing strategically located properties throughout the U.S. for distribution, warehouse and light manufacturing needs. [www.idi.com](http://www.idi.com)

---

**Additional Projects**

**Acxiom**, specializing in customer and information management solutions, opened a new office at 8050 Beckett Center Drive in CMC Beckett Office Park off Princeton-Glendale Road/SR747 (Beckett Ridge District). [www.acxiom.com](http://www.acxiom.com) or [www.cmcproperties.com](http://www.cmcproperties.com)

**Anthony's Cigar Bar & Grill**, featuring renowned chef Mary Swortwood, announced in March 2006 it will open a 2,800 square foot facility at 7641 Voice of America Centre Drive in Midland Atlantic's VOA Centre at Cox and Tylersville Roads. Anthony's is installing specialized air purification and filtration systems for a pleasant dining environment. [www.anthonyswestchester.com](http://www.anthonyswestchester.com) or [www.midlandatlantic.com](http://www.midlandatlantic.com)



Photo by Murray Multimedia Resources

***Anthony's Cigar Bar & Grill  
At the VOA Centre by Midland Atlantic***

**Apex Energy Solutions**, distributor of high performance energy efficient windows, siding, doors and energy furnaces, opened a nearly 1,000 square foot office at 8080 Beckett Center Drive in CMC Beckett Office Park off Princeton-Glendale Road/SR747 (Beckett Ridge District). [www.apexenergysolutions.com](http://www.apexenergysolutions.com) or [www.cmcproperties.com](http://www.cmcproperties.com)

**Beazer Homes**, a national residential home builder, announced in March 2006 it will relocate its existing West Chester division office to a new 16,000 square feet facility at 8612 Jacquemin Drive in Schumacher Dugan Construction's Union Centre Officeplex fronting Union Centre Boulevard. Beazer Homes expects to open July 2006 and will have 120 employees working out of this division. [www.beazer.com](http://www.beazer.com) or [www.schumacher-dugan.com](http://www.schumacher-dugan.com)



Image by Schumacher Dugan Construction

***Beazer Homes at Union Centre Officeplex  
By Schumacher Dugan Construction***

**Brown Eyed Girl (The)**, clothing and accessories store, will open a nearly 1,000 square foot facility at 8988 Cincinnati-Dayton Road in the Olde West Chester District east of I-75.

Builder's Financial of Ohio announced in March 2006 it will open a new office at 8080 Beckett Center Drive in CMC Beckett Office Park off Princeton-Glendale Road/SR747 (Beckett Ridge District). [www.cmcproperties.com](http://www.cmcproperties.com)

**Cardinal Logistics**, a third-party logistics, transportation and supply-chain solutions provider, announced in March 2006 it will open a new office at 8050 Beckett Center

Drive in CMC Beckett Office Park off Princeton-Glendale Road/SR747 (Beckett Ridge District). [www.cardlog.com](http://www.cardlog.com) or [www.cmcproperties.com](http://www.cmcproperties.com)

**Cheviot Savings Bank**, savings association serving southwestern Ohio since 1911, announced in March 2006 it will open a new lending center at 8050 Beckett Center Drive in CMC Beckett Office Park off Princeton-Glendale Road/SR747 (Beckett Ridge District). [www.cheviotsavings.com](http://www.cheviotsavings.com) or [www.cmcproperties.com](http://www.cmcproperties.com)



### ***CMC Beckett Office Park***

**Driver ED Academy**, providing driver's education, announced in March 2006 it will open a new facility at 7237 Cincinnati-Dayton Road (at Hamilton-Mason Road) in the Beckmark Building. [www.DriverEDAcademy.com](http://www.DriverEDAcademy.com) or [www.landfordevelopment.us/os.htm](http://www.landfordevelopment.us/os.htm)

**FedEx/Kinko's**, office and print center, announced in March 2006 it will open a 2,000 square foot facility at 9330 Union Centre Boulevard in the US Bank Centre building in West Chester Towne Centre. FedEx/Kinko's will open mid-June 2006. [www.fedexkinkos.com](http://www.fedexkinkos.com) or [www.schumacher-dugan.com](http://www.schumacher-dugan.com)

**Freedom Mortgage Corporation** opened a new office at 8050 Beckett Center Drive in CMC Beckett Office Park off Princeton-Glendale Road/SR747 (Beckett Ridge District). [www.freedommortgage.com](http://www.freedommortgage.com) or [www.cmcproperties.com](http://www.cmcproperties.com)

**HWZ Contracting**, commercial flooring company, opened a 14,400 square feet facility in March 2006 at 4730 Ashley Drive off Princeton-Glendale Road/SR747.

**IceTech America, Inc.**, manufacturers of dry ice blasting equipment, opened its U.S. headquarters in a new 1,030 square foot office facility at 8050 Beckett Center Drive in CMC Beckett Office Park off Princeton-Glendale Road/SR747 (Beckett Ridge District). [www.icetech.dk](http://www.icetech.dk) or [www.cmcproperties.com](http://www.cmcproperties.com)

**K-Homes** opened a new office facility at 8050 Beckett Center Drive in CMC Beckett Office Park off Princeton-Glendale Road/SR747 (Beckett Ridge District).

[www.cmcproperties.com](http://www.cmcproperties.com)

**Lakota School District** broke ground in March 2006 on a new 75,397 square foot elementary school at 4400 Smith Road west of SR 747 (Beckett Ridge District). Construction is scheduled for completion August 2007. [www.lakotaonline.com](http://www.lakotaonline.com)



Image by Lakota School District

***Lakota School District  
Smith Road Elementary***

**Maurices**, featuring men's and women's fashions, announced in March 2006 it will open a 4,025 square foot facility at 7578 Voice of America Centre Drive in Midland Atlantic's VOA Centre at Cox and Tylersville Roads. [www.maurices.com](http://www.maurices.com) or [www.midlandatlantic.com](http://www.midlandatlantic.com)

**Melson's Tax & Financial Services** opened a new office at 8050 Beckett Center Drive in CMC Beckett Office Park off Princeton-Glendale Road/SR747 (Beckett Ridge District). [www.cmcproperties.com](http://www.cmcproperties.com)

**Navis Pack & Ship Center**, offering warehouse services, custom packaging, crating, and worldwide shipping, leased a 4,727 square foot facility in March 2006 at 4762 Interstate Drive off Princeton-Glendale Road/SR747. [www.gonavis.com](http://www.gonavis.com)

**Nova System Solutions**, specializing in the military communications market and providing products and support for major defense communications, announced in March 2006 a 10,800 square foot expansion to its West Chester facility at 9928 Windisch Road (off Allen Road) in RGW Development's Union Commerce Centre. Nova Systems has 39 employees. [www.nova-eng.com](http://www.nova-eng.com)



***Union Commerce Center  
By RGW Development***

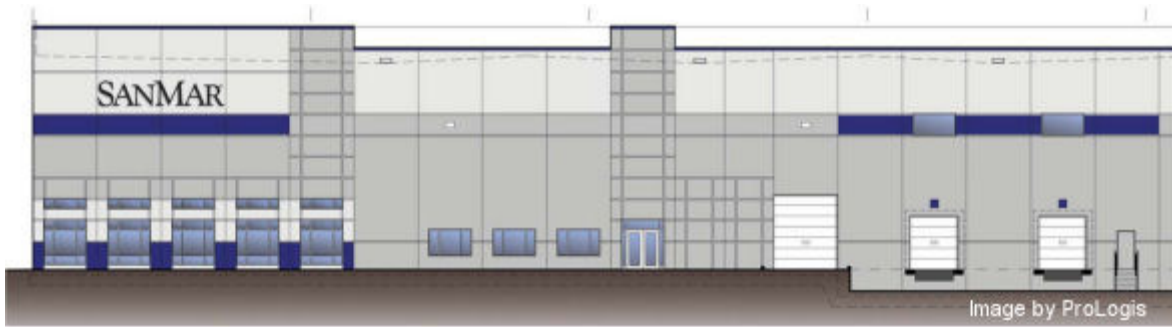
**Orr Protection Services**, offering design, installation and service of fire protection systems, announced in March 2006 it will relocate to a 6,067 square foot facility at 9914 Windisch Road (off Allen Road) in RGW Development's Union Commerce Centre. Orr Protection has 10 employees. [www.orrprotection.com](http://www.orrprotection.com)

**Papa Murphy's**, take 'n' bake pizza, announced in March 2006 it will open a 1,391 square foot facility at 4950 Union Centre Pavilion Drive in the Union Centre Pavilion (anchored by Bigg's) at Princeton-Glendale Road/SR747 and Union Centre Boulevard. [www.papamurphys.com](http://www.papamurphys.com)

**Pearle Vision**, optical retailers, announced in March 2006 it will open a 2,184 square foot facility at 7675 Voice of America Centre Drive in Midland Atlantic's VOA Centre at Cox and Tylersville Roads. [www.pearlevision.com](http://www.pearlevision.com) or [www.midlandatlantic.com](http://www.midlandatlantic.com)

**Roosevelt Surgical Associates of West Chester**, general and peripheral vascular surgical group, announced in March 2006 it will open a 2,679 square foot medical office at 7798 University Court in the University Pointe medical campus off Cox Road. Roosevelt Surgical will open June 2006. [www.ucphysicians.com](http://www.ucphysicians.com)

**SanMar Corporation**, a Seattle-based company specializing in overnight delivery of apparel to screen and apparel imprinters, announced in March 2006 a 196,780 square foot two-story mezzanine addition to its 770,000 square foot facility at 8901 Global Way in ProLogis Park. The building is scheduled for completion Summer 2006. [www.sanmar.com](http://www.sanmar.com) or [www.prologis.com](http://www.prologis.com)



***SanMar Corporation  
at ProLogis Park***

**Schindler Elevators**, global manufacturer of elevators and escalators, announced in March 2006 it will open a 14,400 square foot facility in Duke's World Park Building 15 at 5426 Duff Drive off International Boulevard. Schindler will open mid-June 2006. [www.schindler.com](http://www.schindler.com) or [www.dukerealty.com](http://www.dukerealty.com)



***Schindler Elevators  
At World Park by Duke Realty***

**Transunion**, global provider of business intelligence services in more than 30 countries worldwide, announced in March 2006 it will open a 2,600 square foot office facility at 9075 Centre Pointe Drive in Duke Realty's Centre Pointe Office Park in the Union Centre Boulevard District. [www.transunion.com](http://www.transunion.com) or [www.dukerealty.com](http://www.dukerealty.com)

## West Chester Development Council

*Your community experts for business relocation and expansion*

9577 Beckett Road, Suite 100  
West Chester, Ohio 45069-5014  
(513) 755-4214  
(513) 874-6804 (fax)  
[www.WestChesterDevelopment.com](http://www.WestChesterDevelopment.com)

We respect that you may no longer need to receive our communications.  
Safe unsubscribe information appears at the bottom of this message.

Sent from West Chester Development Council - 9577 Beckett Road, Suite 100 - West Chester, Ohio  
45069-5014

Generated by  [Learn more](#)  
Cincinnati, Ltd.